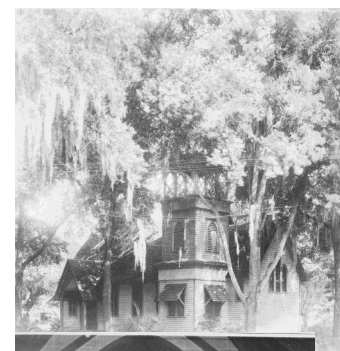




Welcome to *Holy Trinity Episcopal Church!*

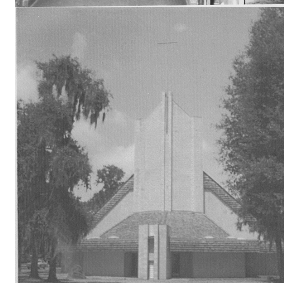
Our History ...



Episcopal services in Bartow were reported in the 1880s by local newspapers. Construction of our first church, which was named St. Joseph's, began October 13, 1893. The building was consecrated by the Right Reverend William Gray on April 14, 1901, with a name change to *Holy Trinity Episcopal Church*. After sixty-nine years as a mission in downtown Bartow, Holy Trinity attained Parish status in 1955.



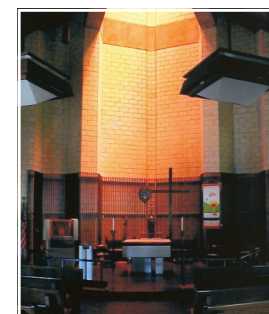
The church now stands on 6.5 beautiful wooded acres in the heart of Bartow and includes our sanctuary, a fellowship hall with a stage and full kitchen, two wings housing Sunday school rooms, offices, a nursery, and a rectory. With regular maintenance projects being undertaken as needed, the property and structures remain attractive and in good repair.



Famed Architect Frank Lloyd Wright designed many buildings in our area, most notably Florida Southern College in Lakeland. Our sanctuary was designed by his protégé Nils Schweizer in 1962 and represents a similar architectural style. His influence is seen in the design with its free-standing altar,



the fan-shaped placement of pews and its transition space (the narthex) between the exterior doors and the entrance into the central part of the church.



Unique architectural effects feature the low ceiling in the narthex (tomb) ascending into the high ceiling dome of the nave (resurrection). A skylight over the altar represents the presence of the Holy Spirit. Our distinctive stained glass windows were created by parishioners. The sanctuary was dedicated on September 13, 1970.

Street Address: 500 West Stuart Street n Bartow, Florida
Mailing Address: Post Office Box 197 n Bartow, Florida 33831
Phone/Fax: 863-533-3581 n E-mail: htcbartow@gmail.com
Website: www.holytrinitybartow.com

Our parish is most proud of our current facilities and the growth they can accommodate.

Our Community . . .

Founded in 1851, and with a current population of approximately 18,000, Bartow is classic “Small Town America.” The community is proud of its thriving, tree-lined Main Street, historic neighborhoods, excellent schools, popular parks and public facilities, and a strong, old fashioned sense of community.

Being only an hour from both Tampa and Orlando and fifteen miles from the larger communities of Lakeland and Winter Haven, Bartow provides all the benefits of day-to-day living in a small town, with services and amenities readily available in the nearby

larger urban areas. For many years Bartow was somewhat of an island surrounded by large land holdings of phosphate and agricultural interests. In recent years those land holdings have become open to development. The future of Bartow will include thousands of acres of new residential and commercial development. With proper development, the community looks forward to maintaining its small town ambiance, while enjoying the benefits of steady growth.

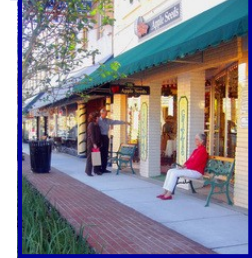
As the county seat of Polk County, with a population of more than 600,000, government has always played an important role in the economy of our community. The County administration, court system, School Board, Florida Department of Transportation district headquarters and other governmental agencies bring thousands of workers to Bartow every week day. As the now-available lands around Bartow begin to develop, it is anticipated that more of these government workers, many of whom are professionals, will make their home in Bartow. In addition to government, the agricultural and phosphate industries have been the other two mainstays of the local economy. Agriculture, especially citrus and cattle, is still important to Bartow, while the role of the phosphate industry has declined as phosphate operations have moved further south.

Education has always been a priority in Bartow, and it has schools at all levels recognized for excellence. The county school system that serves approximately 100,000 students is headquartered in Bartow, and the International Baccalaureate program and Summerlyn Academy that are part of Bartow Senior High are both recognized as some of the top high school programs in the nation. Also available locally are several private schools. There are a number of colleges and universities in Polk County within a 30 minute drive of Bartow.

The community takes pride in other amenities that are available to its citizens. A new hospital in Bartow was constructed in 1999. The City of Bartow has a strong recreational base, with well maintained local parks, a golf course and a variety of sporting activities available for the youth. Bartow loves a parade, and for more than 70 years the annual Halloween Parade and Carnival have been a favorite community activity. Similar events are held on the Fourth of July and at the beginning of the Christmas season. There is a

modern public library in Bartow, and the beautifully refurbished 1908 neo-classical courthouse houses the county’s historical museum and genealogical library. World

famous attractions are within an hour’s drive of Bartow, including the Disney parks, Busch Gardens, Sea World and Universal City.



Our Parish . . .

With a parish-wide survey, we identified who and what we are now and where we would like to be.

Overwhelmingly, we describe our parish as a loving, caring, hospitable, family-oriented church. The parish shares a closeness that has not been disturbed by controversial issues being considered at the higher levels of the church. While parishioners obviously share a variety of views on political and theological questions, such diversity has been recognized and accepted in the parish without rancor.



• The membership recognizes a need for renewal and revival of our parish. We are an aging church, and recognize the need for expansion of our membership with younger families. We have the infrastructure, the facilities and the commitment to increase our parish. With the anticipated growth of Bartow in coming years, and with proper leadership, we look forward to growth and greater diversity of our church membership.

- Financially, Holy Trinity is stable. Last year (2015) the church’s operating income was \$230,833, and the operating budget was 234,089, including the tithe to the Diocese. The church currently has more than \$52,000 in the Building Fund and an Endowment Fund of \$100,000.
- Holy Trinity has an active baptized membership of 167, with 115 communicants in good standing. Easter attendance this year was 110, and average Sunday attendance is 72. Eight baptisms, four confirmations and six burials were performed last year.
- The parish and its rector are active and visible in the community, the parish is a strong supporter of the Bartow Church Service Center that provides goods and services to the needy, and also supports the Women’s Care Center. Each year hundreds of Easter baskets are collected, filled and wrapped by the parish for local children, and our Christmas Angel Tree Project provides gifts for local foster children. We hold an Annual Shrove Tuesday Pancake Supper open to our entire community with proceeds benefiting local outreach.

